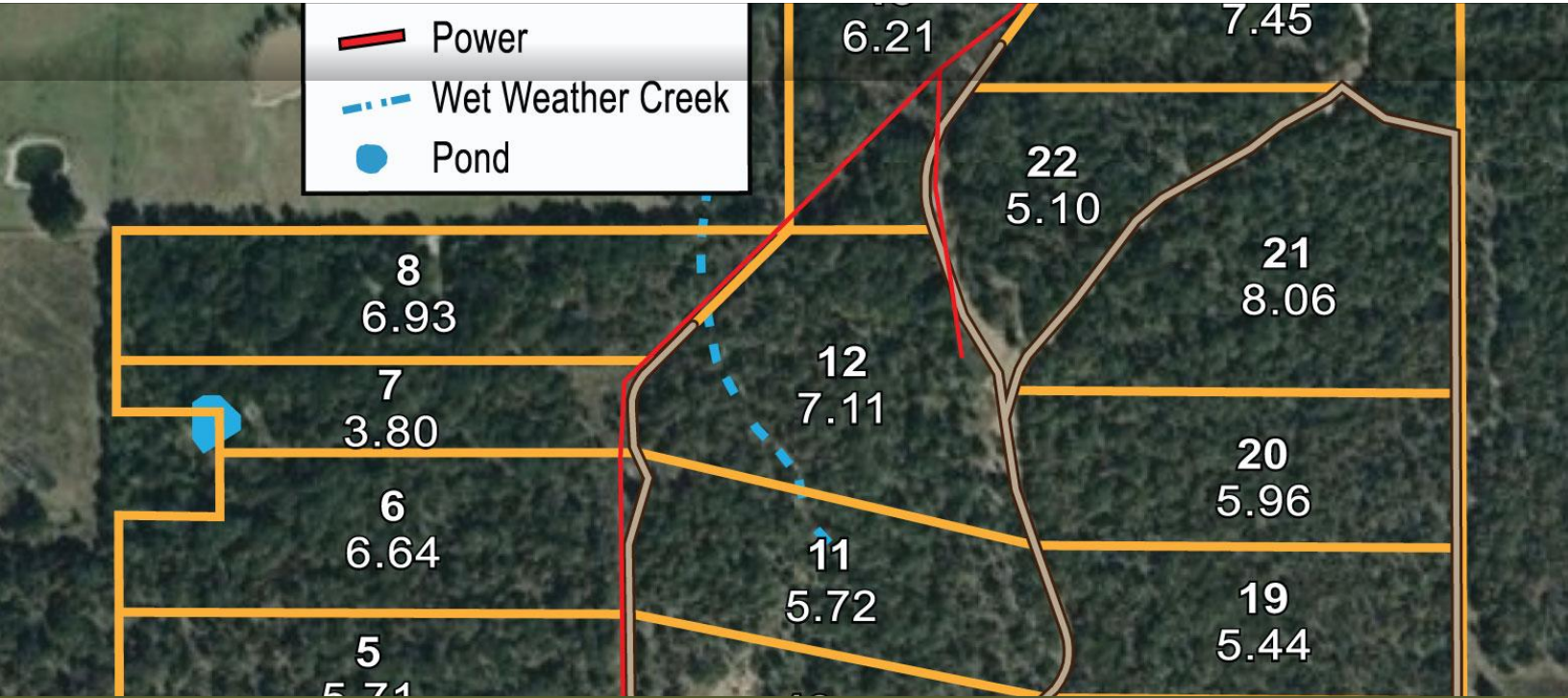


JLH ESTATES

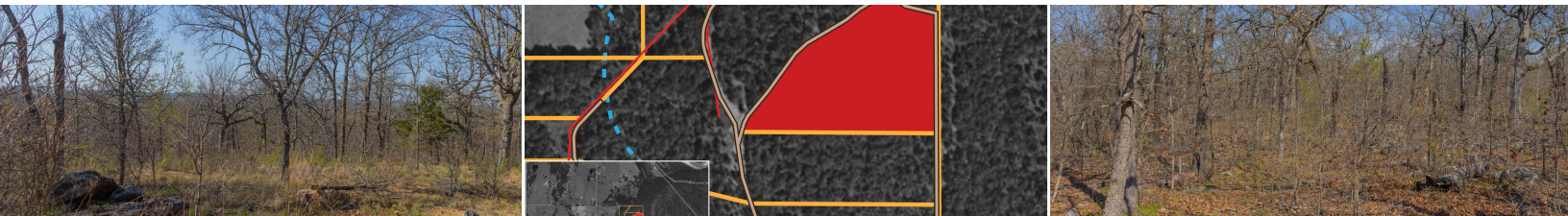
Weleetka, Okfuskee County, Oklahoma · 74839

Owner Financed · Everyone Qualifies · \$999 Down · Fast 48-Hour Closings



Zero Credit Land · 469-908-2174

ZeroCreditLand.com



JLH Estates: Okfuskee County Oklahoma Land for Sale

Imagine owning your own slice of paradise nestled in the heart of Okfuskee County, Oklahoma. JLH Estates spans an impressive 138.32 acres, offering a unique opportunity to embrace the great outdoors and create your dream sanctuary. The property features multiple tracts ranging from 3.80 to 8.06 acres, making it a perfect fit whether you're looking to build a cozy cabin, establish a homestead, or simply explore the surrounding natural beauty. With options for RV living and recreational use, the possibilities are endless.

JLH ESTATES — PROPERTY OVERVIEW

Weleetka, Okfuskee County, Oklahoma

ZeroCreditLand.com
469-908-2174

17

AVAILABLE

138.32

TOTAL ACRES

Oklahoma

STATE

Okfuskee

COUNTY

\$474.18

STARTING/MO

UTILITIES

No Power · Stream · Pond

ACREAGE RANGE

3.80 – 8.06 acres

Total Acres: 138.32

Available Acres: 102.04

Sold Acres: 36.28

MONTHLY PRICE RANGE

\$474.18 - \$789.53 /mo

(10% discount, \$999 down, 10 years, 9.99% APR)

Available Tracts: 17

Sold Tracts: 6

ZONING & USE

Zoning: Recreational, Residential

Mobile/Manufactured Homes: Allowed

RV Living: Full-Time

Hunting: Allowed

ACCESS & ROADS

Road Type: Unmaintained Dirt Road

PROPERTY DETAILS

School District: Okfuskee County

Electric Company: <https://okemahok.gov/how-do-i/>

Electric Location: utility easements have been established to allow for the future extension of electricity along the parcel boundaries

Water Source: You are entitled to drill a domestic well on your property at your own cost. Water is not guaranteed to be available at any specific depths, quantity, or quality

Elevation: 837 ft

Coordinates: 35°18'041.7"N, 96°05'046.8"W

Map: <https://www.google.com/maps?q=35.311592,-96.09633>

VIEW PROPERTY



Click or Scan

DOWNLOAD OUR APP



Click or Scan

Flexible owner financing available

Down Payments start at \$999 + \$249 Doc Fee

Payment Options

JLH ESTATES — AVAILABLE TRACTS

Weleetka, Okfuskee County, Oklahoma

ZeroCreditLand.com
469-908-2174

Save 15% with 10% Down · 20% Off with 20% Down · Pricing shown is with \$999 down

Tract	Acres	Utilities	Price	Monthly (10yr)	Monthly (20yr)	Status
JLH Estates Tract 7	3.80	Pond	\$41,024.00	\$474.52	\$346.42	Available
JLH Estates Tract 10	4.63	—	—	—	—	Sold
JLH Estates Tract 3	4.92	—	\$41,346.00	\$478.35	\$349.22	Available
JLH Estates Tract 22	5.10	—	\$40,995.00	\$474.18	\$346.17	Available
JLH Estates Tract 15	5.22	—	\$41,959.00	\$485.64	\$354.54	Available
JLH Estates Tract 4	5.23	—	\$42,040.00	\$486.60	\$355.24	Available
JLH Estates Tract 19	5.44	—	\$43,728.00	\$506.67	\$369.89	Available
JLH Estates Tract 2	5.52	—	—	—	—	Sold
JLH Estates Tract 5	5.71	—	\$45,898.00	\$532.47	\$388.73	Available
JLH Estates Tract 11	5.72	—	\$55,732.00	\$649.38	\$474.08	Available
JLH Estates Tract 14	5.84	—	—	—	—	Sold
JLH Estates Tract 9	5.95	—	\$44,929.00	\$520.95	\$380.32	Available
JLH Estates Tract 20	5.96	—	\$47,908.00	\$556.36	\$406.17	Available
JLH Estates Tract 1	6.04	—	\$56,643.00	\$660.21	\$481.98	Available
JLH Estates Tract 13	6.21	—	\$49,917.00	\$580.25	\$423.61	Available
JLH Estates Tract 16	6.39	—	—	—	—	Sold
JLH Estates Tract 6	6.64	—	\$53,374.00	\$621.34	\$453.61	Available
JLH Estates Tract 18	6.79	—	—	—	—	Sold
JLH Estates Tract 8	6.93	Stream	\$67,521.00	\$789.53	\$576.40	Available
JLH Estates Tract 12	7.11	—	—	—	—	Sold
JLH Estates Tract 23	7.45	—	\$59,885.00	\$698.75	\$510.12	Available
JLH Estates Tract 17	7.66	—	\$61,573.00	\$718.82	\$524.77	Available
JLH Estates Tract 21	8.06	—	\$64,788.00	\$757.04	\$552.68	Available

Fast 48-Hour Closings

Great for Homesteading and Off-Grid Living.

Monthly Payment Options:

- ACH - Free
- Online or over the phone - \$18 Fee

Additional Information:

- 10 Year Fixed Rate
- All loans are free from prepayment penalties
- Discount applied to purchase price before financing
- All payments include principal and interest
- All 20 year terms require a 3 year refinance option

Financing and closing services are provided by Classic Country Land, LLC
Availability and pricing are subject to change without notice. Please contact us to confirm current details and reserve your tract.

HOW OUR FINANCING WORKS

Because we own the properties we sell, we're able to offer direct owner financing without going through a traditional bank. This means there are no loan applications, no credit checks, and no lengthy approval process, making it much easier for buyers to secure land.

After choosing a property, you can select the financing package that best suits your budget. Each option includes its own down payment and interest rate, and every purchase requires a \$249 closing cost. To reserve a property, the down payment along with the closing cost is required.

Once the payment is completed, we prepare your purchase agreement and send it to you electronically through PandaDoc. After the agreement is signed, the property is officially under contract and **you are free to begin using it right away.**

If you would prefer to visit the property before committing, we also offer a **two-week option agreement for \$500.** This temporarily reserves the property while you view it in person. If you decide not to move forward, the \$500 can be transferred to another property or applied as a credit.

There are **no penalties for early payoff**, and any extra payments go directly toward reducing your principal balance.

To Schedule a Property Visit or to Purchase

Please call or text

469-908-2174

Schedule Property Visit

Buy Now

Chad Williams

📞 469-908-2174

✉ Chad@ZeroCreditLand.com

